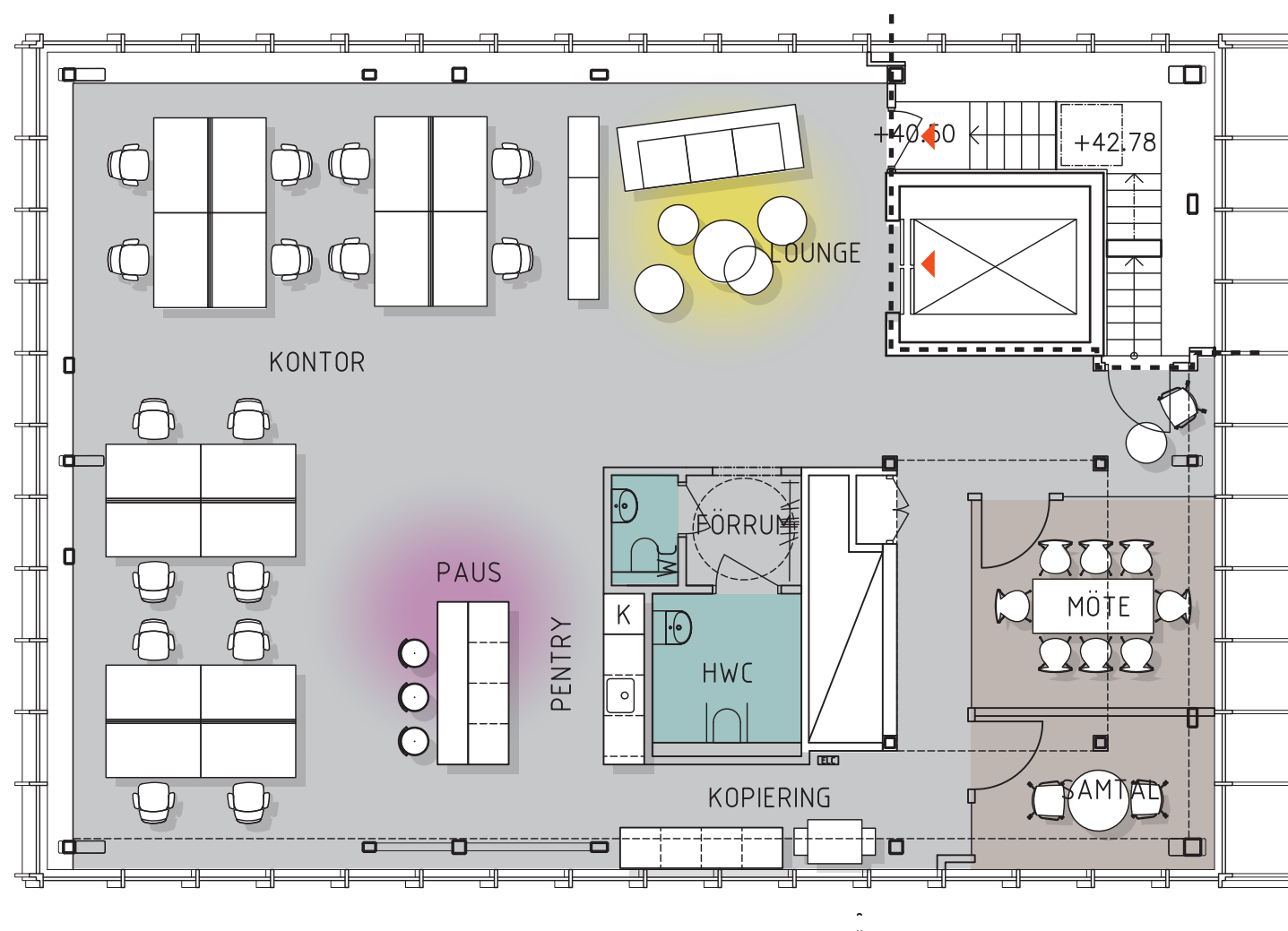


Plan 10
ca 170 kvm

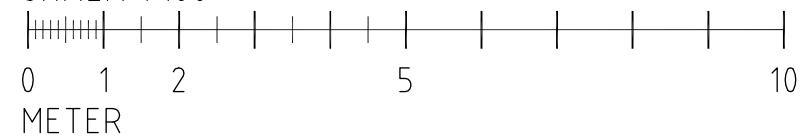
Antal arbetsplatser
16 pers öppen yta
(skrivbord = 800x1400mm)

Bar/pausbord
Lounge 6-8 pers

Antal mötesrum
Möte 6-8p: 1 st
Samtal: 1-2 p: 1 st



SKALA 1:100



Uarda 1

white

Skala 1:100 (A3)
2017-06-19

HG SKISS
Plan 10

Fabege | ARENASTADEN